

Time delay relay 0.1s - 1 hour, FC-31, 12V

Reference: AM9172

EAN13: -

UPC: 85364190

Product attributes:

Product features:

Voltage: 12V DC

Waterproof grade: IP20



Product description:

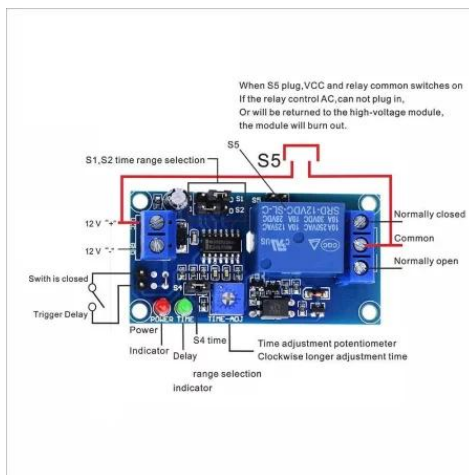
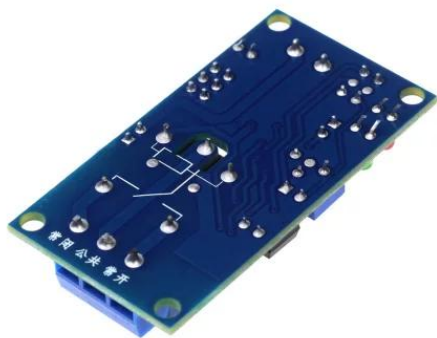
When connected to the power supply, the relay switches on after a set time delay. Delay setting by SMD trimmer. NO and NC connection.

Adjustable switching time 100 ms to 1 hour

Potential-free relay contact

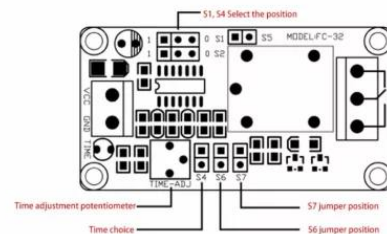
Supply voltage: 12V DC

Operating current:

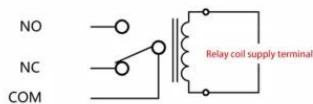


Delay time selection method:

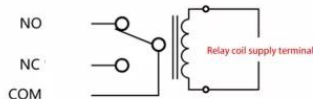
| S1 position | S1 position | Not insert S4 time | Insert S4 time | As shown |
|-------------|-------------|--------------------|----------------|----------|
| 0 | 1 | 0.13S-1.3S | 1.5S-14.5S | |
| 1 | 0 | 0.5S-5.2S | 6S-58S | |
| 0 | 0 | 4.4S-42S | 48S-463S | |
| 1 | 1 | 38S-340S | 389S-3700S | |



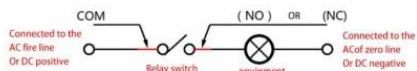
How the relay works



When the relay coil at both ends without voltage or voltage is not enough, the relay COM and NC side connected



When the relay coil at both ends reaches the pull-in voltage, the relay COM and NO side connected



When the relay switch is closed, the device has a voltage at both ends, can work properly, switch off does not work